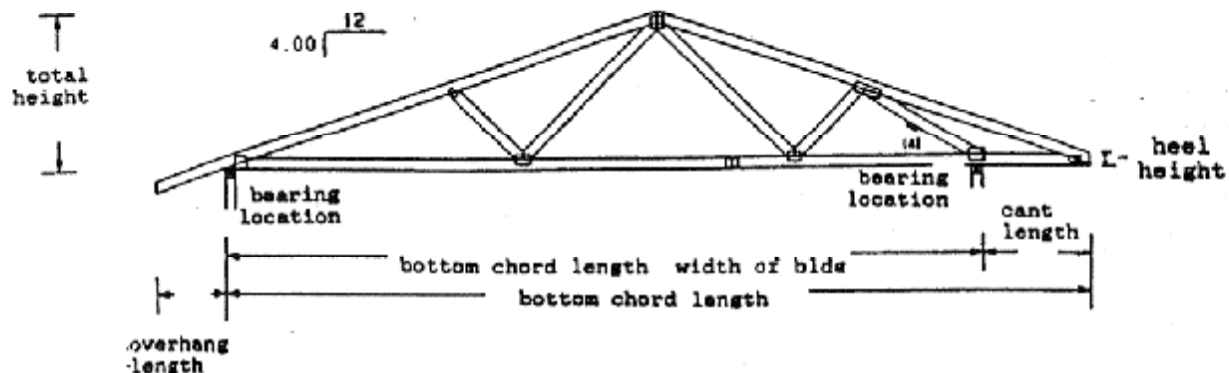


S.R.SLOAN INC

ROOF & FLOOR TRUSSES • CUSTOM STAIRS & STAIR PARTS
WHITESBORO, NY • ORWIGSBURG, PA
PO BOX 560 • NEW HARTFORD, NY 13413
1-800-366-7562 • Fax(315)736-7740
www.srsloan.com

How to measure a truss



1. Always give the total length of the bottom chord regardless of bearing location.
2. Next give the pitch of the truss or the total height of the truss:
 - A. Pitch is always given in inches per foot - e.g. 4/12.
 - B. Total height of a truss is measured from the bottom of the bottom chord to the top of the top chord.
3. When matching an existing roof, the total height is needed and the heel height is needed. (Heel height is the vertical distance from outside edge of the plate to the top of the top chord at that point.)
4. Next give the overhang length which is the horizontal distance from the outside edge of the plate to the end of the top chord. (Bottom chord stops at the outside edge of the plate.)
5. Next give any cantilever lengths that are needed. A cantilever length is the horizontal distance from the outside edge of the plate to the end of the truss (bottom chord stops at the end of the truss).