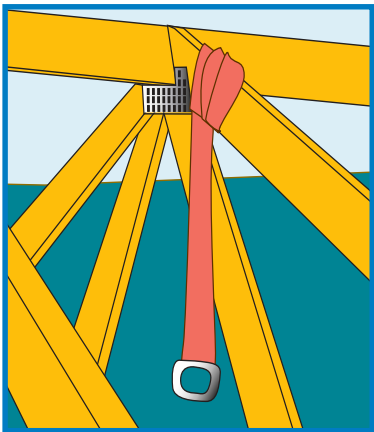


Truss Technology IN BUILDING

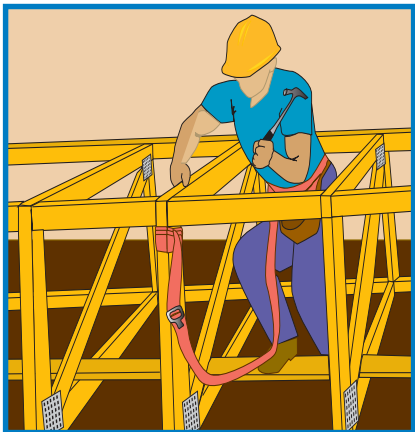


WARNING

Trusses Are NOT Designed to be Fall Protection Anchors:

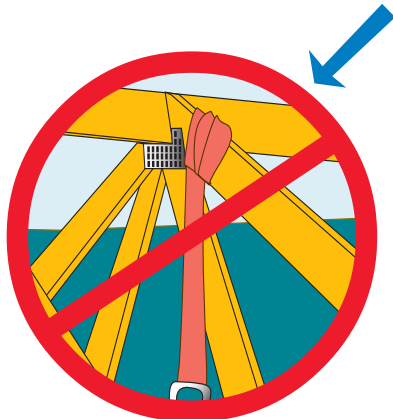


Use of a single truss as an anchorage point for any type of personal fall arrest system is dangerous!



=

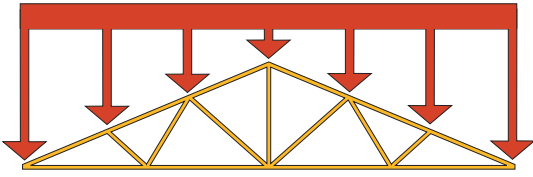
DANGER



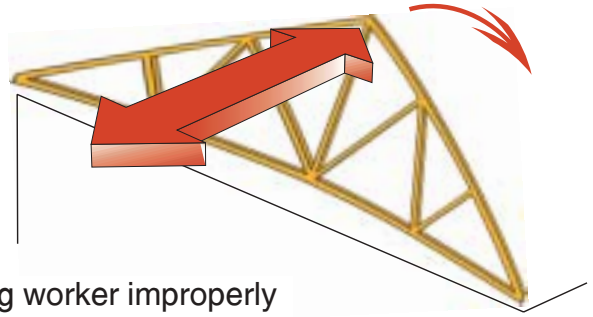
This practice will increase risk of serious injury or death to workers.



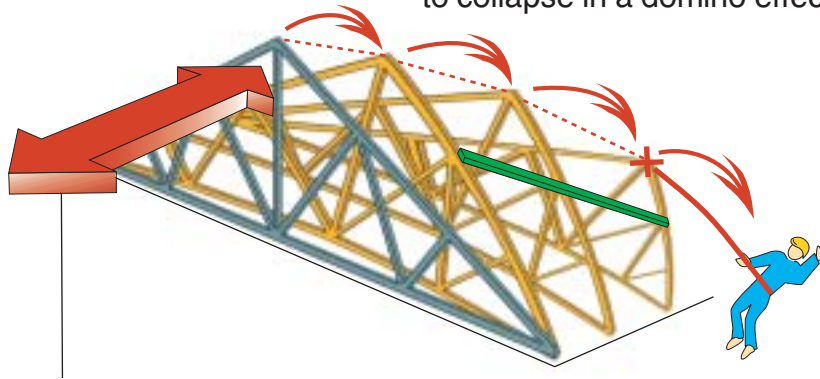
Trusses are designed to support loads in the same plane:



NOT Lateral Impact Loads



A falling worker improperly attached to a single truss could cause all the trusses on the structure to collapse in a domino effect.



Now that you have seen what **NOT** to do, here are some tips on what you can do.

Option 1: Safest possible approach:

Pre-assemble the roof truss system on the ground.

Sheath and brace for stability.



Lift and set in place.

This pre-assembled section can then be used as a tie-off point as necessary.

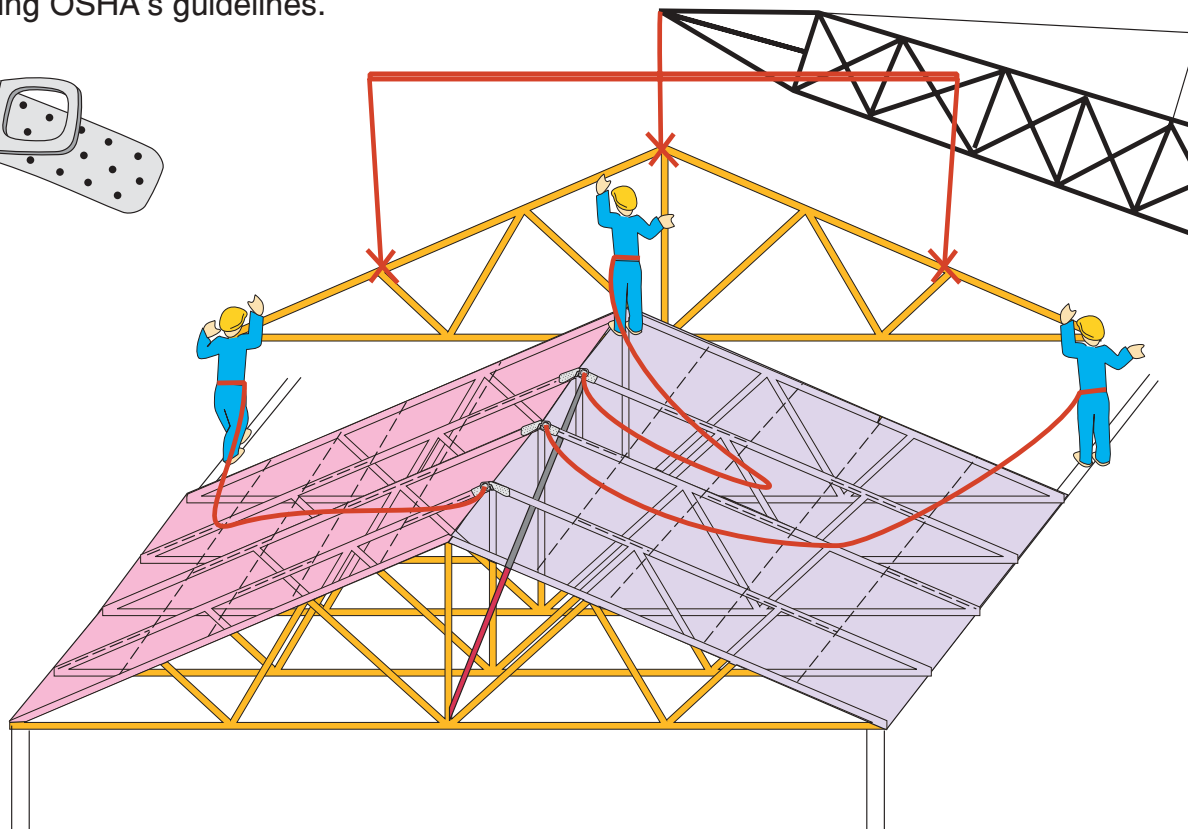
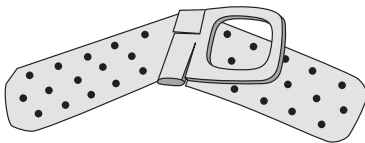


Option 2: Use a scaffolding system with personal fall arrest system, following OSHA's guidelines.



Option 3: Use a Roof Peak Anchor.

Sheath and brace a portion of the roof and use a roof anchor and personal fall arrest system, following OSHA's guidelines.



SUMMARY

- A single truss is **NOT** designed to withstand loads from a falling person.
- A single truss, if used as an anchorage point, can pull all the trusses on top of the falling person.
- Depending on how the entire building is braced, incorrect fall protection attachments could cause an entire building collapse.
- In all cases, the person faces the increased risk of causing a serious truss collapse.



WHAT TO DO

- The safest approach is to pre-assemble, brace and sheath the truss system on the ground, lift and set in place.
- Use a scaffolding system with personnel fall arrest system, following OSHA's guidelines.
- Sheath and brace a portion of the roof and use a roof anchor, following OSHA's guidelines.

Always, Think Fall Protection Safety.

If you are uncertain, contact OSHA or a design professional for assistance.

Wood Truss Council of America

One WTCA Center
6300 Enterprise Lane • Madison, WI 53719
608/274-4849 • 608/274-3329 (fax)
www.woodtruss.com • wtca@woodtruss.com

Truss Technology IN BUILDING

An informational series designed to address the issues and questions faced by professionals in the building construction process.

Copyright © 2000-2002 Wood Truss Council of America, Inc.

Reproduction of this document, in any form, is prohibited without written permission from WTCA. This document should appear in more than one color.